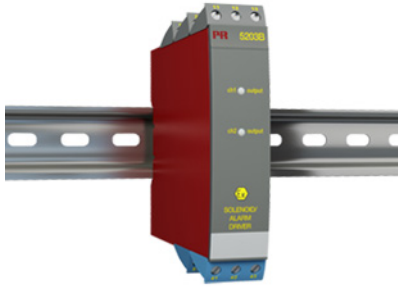


Ex solenoid / alarm driver



5203B

- 1- or 2-channel version
- Solenoid driver for I.S. area
- 3- / 5-port 3.75 kVAC galvanic isolation
- Digitally controlled voltage supply for I.S. area
- Universal supply by AC or DC



Application

- Driver with safety barrier for the control of ON / OFF solenoids mounted in hazardous area.
- Driver with safety barrier for the supply of LEDs and acoustic alarms mounted in hazardous area.
- Voltage supply with ON / OFF control of other equipment.

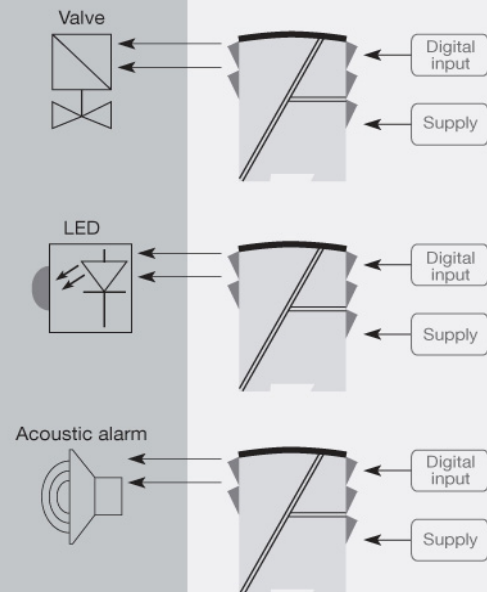
Technical characteristics

- PR5203B has a digital input per channel for the control of the I.S. output voltage.
- Supply, inputs, and outputs are floating and galvanically separated.

Mounting / installation

- Mounted vertically or horizontally on a DIN rail. By way of the 2-channel version up to 84 channels per meter can be mounted.

Applications



Order:

Type	Input	Ex barrier	Channels
5203B	PNP : 1	[EEx ia] type : F	Single : 1
	Switch : 2		
	NPN : 3	[EEx ia] type : H	Single : 1
		[EEx ia] type : I	Double : 2

Environmental Conditions

Operating temperature..... -20°C to +60°C
 Calibration temperature..... 20...28°C
 Relative humidity..... < 95% RH (non-cond.)
 Protection degree..... IP20

Mechanical specifications

Dimensions (HxWxD)..... 109 x 23.5 x 130 mm
 Weight approx..... 230 g
 Wire size..... 1 x 2.5 mm² stranded wire
 Screw terminal torque..... 0.5 Nm

Common specifications**Supply**

Supply voltage, universal..... 21.6...253 VAC, 50...60 Hz or
 19.2...300 VDC
 Fuse..... 400 mA SB / 250 VAC
 Max. required power..... ≤ 4 W (2 channels)
 Internal power dissipation..... ≤ 2 W (2 channels)

Isolation voltage

Isolation voltage, test /
 working..... 3.75 kVAC / 250 VAC
 PELV/SELV..... IEC 61140
 Max. frequency..... 20 Hz
 EMC immunity influence..... < ±0.5% of span
 Extended EMC immunity: NAMUR
 NE21, A criterion, burst..... < ±1% of span

Input specifications**NPN and mechanical switch**

Trig level LOW..... ≤ 4.0 VDC
 Trig level HIGH..... ≥ 7.0 VDC
 Max. external voltage..... 28 VDC
 Input impedance..... 3.48 kΩ

PNP

Trig level LOW..... ≤ 4.0 VDC
 Trig level HIGH..... ≥ 7.0 VDC
 Max. external voltage..... 28 VDC
 Input impedance..... 3.48 kΩ

Output specifications

Output voltage..... See Ex data in manual
 Output current..... See Ex data in manual
 Output ripple..... < 40 mVRMS

Observed authority requirements

EMC..... 2014/30/EU
 LVD..... 2014/35/EU
 EAC..... TR-CU 020/2011

Approvals

ATEX..... DEMKO 99ATEX126257, II (1)
 GD [EEx ia] IIC
 UL..... UL 913, UL 508
 EAC Ex..... RU C-DK.HA65.B.00355/19