

PERFORMANCE
MADE
SMARTER

Product manual

5909

Loop Link

USB communications interface



UK
CA CE

TEMPERATURE | I.S. INTERFACES | COMMUNICATION INTERFACES | MULTIFUNCTIONAL | ISOLATION | DISPLAY

No. 5909V105-UK
From serial no.: 059999999

PR
electronics

6 Product Pillars

to meet your every need

Individually outstanding, unrivalled in combination

With our innovative, patented technologies, we make signal conditioning smarter and simpler. Our portfolio is composed of six product areas, where we offer a wide range of analog and digital devices covering over a thousand applications in industrial and factory automation. All our products comply with or surpass the highest industry standards, ensuring reliability in even the harshest of environments and have a 5-year warranty for greater peace of mind.



Temperature

Our range of temperature transmitters and sensors provides the highest level of signal integrity from the measurement point to your control system. You can convert industrial process temperature signals to analog, bus or digital communications using a highly reliable point-to-point solution with a fast response time, automatic self-calibration, sensor error detection, low drift, and top EMC performance in any environment.



I.S. Interface

We deliver the safest signals by validating our products against the toughest safety standards. Through our commitment to innovation, we have made pioneering achievements in developing I.S. interfaces with SIL 2 Full Assessment that are both efficient and cost-effective. Our comprehensive range of analog and digital intrinsically safe isolation barriers offers multifunctional inputs and outputs, making PR an easy-to-implement site standard. Our backplanes further simplify large installations and provide seamless integration to standard DCS systems.



Communication

We provide inexpensive, easy-to-use, future-ready communication interfaces that can access your PR installed base of products. All the interfaces are detachable, have a built-in display for readout of process values and diagnostics, and can be configured via push-buttons. Product specific functionality includes communication via Modbus and Bluetooth and remote access using our PR Process Supervisor (PPS) application, available for iOS and Android.



Multifunction

Our unique range of single devices covering multiple applications is easily deployable as your site standard. Having one variant that applies to a broad range of applications can reduce your installation time and training, and greatly simplify spare parts management at your facilities. Our devices are designed for long-term signal accuracy, low power consumption, immunity to electrical noise and simple programming.



Isolation

Our compact, fast, high-quality 6 mm isolators are based on microprocessor technology to provide exceptional performance and EMC-immunity for dedicated applications at a very low total cost of ownership. They can be stacked both vertically and horizontally with no air gap separation between units required.



Display

Our display range is characterized by its flexibility and stability. The devices meet nearly every demand for display readout of process signals and have universal input and power supply capabilities. They provide a real-time measurement of your process value no matter the industry and are engineered to provide a user-friendly and reliable relay of information, even in demanding environments.

Loop Link USB communications interface 5909

Table of contents

Warning	4
Symbol identification	4
Safety instructions	5
Application	6
Technical characteristics	6
Installation	6
System requirements	6
Installation of PReset	6
PRreset installation on Windows 10 / 11	7
Installation from USB	8
Configuration of USB communication in PReset	9
Connection of PR devices using EZ-Mini-Hooks	10
Connection of PR devices using a modular connector	10
Document history	11

Warning



GENERAL

When connected to SYSTEM 5000 by the communication cable, this device can get connected to hazardous electric voltages. Ignoring this warning can result in severe personal injury or mechanical damage.

To avoid the risk of electric shock and fire, the safety instructions of this manual must be observed and the guidelines followed.

The device must only be applied as described in the following.

Prior to the commissioning of the device, this manual must be examined carefully.

Only qualified personnel (technicians) should use this device.

If the device is used in a manner not specified by the manufacturer, the protection provided by the device may be impaired.



**HAZARD-
OUS
VOLTAGE**

Warning

The following operations must only be carried out on a device that is not connected to SYSTEM 5000 and a PC:

Troubleshooting the device.



CAUTION

Repair of the device must be done by PR electronics A/S only.

Warning



**INSTAL-
LATION**

The female communication connector of SYSTEM 5000 is connected to the input terminals on which dangerous voltages can occur. It must only be connected to the programming unit 5909 by way of the attached communication cable.

5909 is provided with galvanic isolation and protective components according to EN60079-11 § 6.2.5 to ensure that the safety components within the connected intrinsically safe devices are protected against overload.

Symbol identification



Triangle with an exclamation mark: Warning / demand. Potentially lethal situations. Read the manual before installation and commissioning of the device in order to avoid incidents that could lead to personal injury or mechanical damage.



The CE mark proves the compliance of the device with the essential requirements of the directives.



The UKCA mark proves the compliance of the device with the essential requirements of the UK regulations.



The double insulation symbol shows that the device is protected by double or reinforced insulation.

Safety instructions

Definitions

Hazardous voltages have been defined as the ranges: 75 to 1500 Volt DC, and 50 to 1000 Volt AC.

Technicians are qualified persons educated or trained to mount, operate, and also trouble-shoot technically correct and in accordance with safety regulations.

Operators, being familiar with the contents of this manual, adjust and operate the knobs or potentiometers during normal operation.

Receipt and unpacking

Unpack the device without damaging it and check whether the device type corresponds to the one ordered. The packing should always follow the device until this has been permanently mounted.

Environment

Avoid direct sun light, dust, high temperatures, mechanical vibrations and shock, and rain and heavy moisture. If necessary, heating in excess of the stated limits for ambient temperatures should be avoided by way of ventilation.

The device must be installed in pollution degree 2 or better.

The device is designed to be safe at least under an altitude up to 2 000 m.

The device is designed for indoor use.

Mounting

Only technicians who are familiar with the technical terms, warnings, and instructions in the manual and who are able to follow these, should connect the device. Should there be any doubt as to the correct handling of the device, please contact your local distributor or, alternatively,

PR electronics A/S
www.prelectronics.com

Year of manufacture can be taken from the first two digits in the serial number.

Programming

During programming, the measuring and connection of external voltages must be carried out according to the specifications of this manual and the manual for the unit to be programmed.

The technician must use tools and instruments that are safe to use.

Normal operation

Operators are only allowed to adjust and operate devices that are safely fixed in panels, etc., thus avoiding the danger of personal injury and damage. This means there is no electrical shock hazard, and the device is easily accessible.

Cleaning

When disconnected, the device may be cleaned with a cloth moistened with distilled water.

Liability

To the extent the instructions in this manual are not strictly observed, the customer cannot advance a demand against PR electronics A/S that would otherwise exist according to the concluded sales agreement.

Application

Loop Link 5909 is a USB communications interface for configuration and monitoring of PR electronics' PC-programmable devices. The USB communication is supported by the Windows versions 10 and 11. PR devices available in the configuration program PReset ver. 5.0 or higher, can be programmed by way of Loop Link 5909.

Technical characteristics

Loop Link 5909 is supplied from the USB port of the PC. If you want to conserve power on a laptop, the USB connector of the 5909 can be connected to an externally supplied hub. The communications connector on the PR devices is galvanically isolated from the USB connection on the PC.

Installation

System requirements

Windows 10 or 11 with the following recommendations:

- Processor > 1 GHz
- Memory 4 GB RAM
- Hard disk space 128 MB

Observed authority requirements

- EMC. 2014/30/EU & UK SI 2016/1091
- LVD. 2014/35/EU & UK SI 2016/1101
- RoHS. 2011/65/EU & UK SI 2012/3032

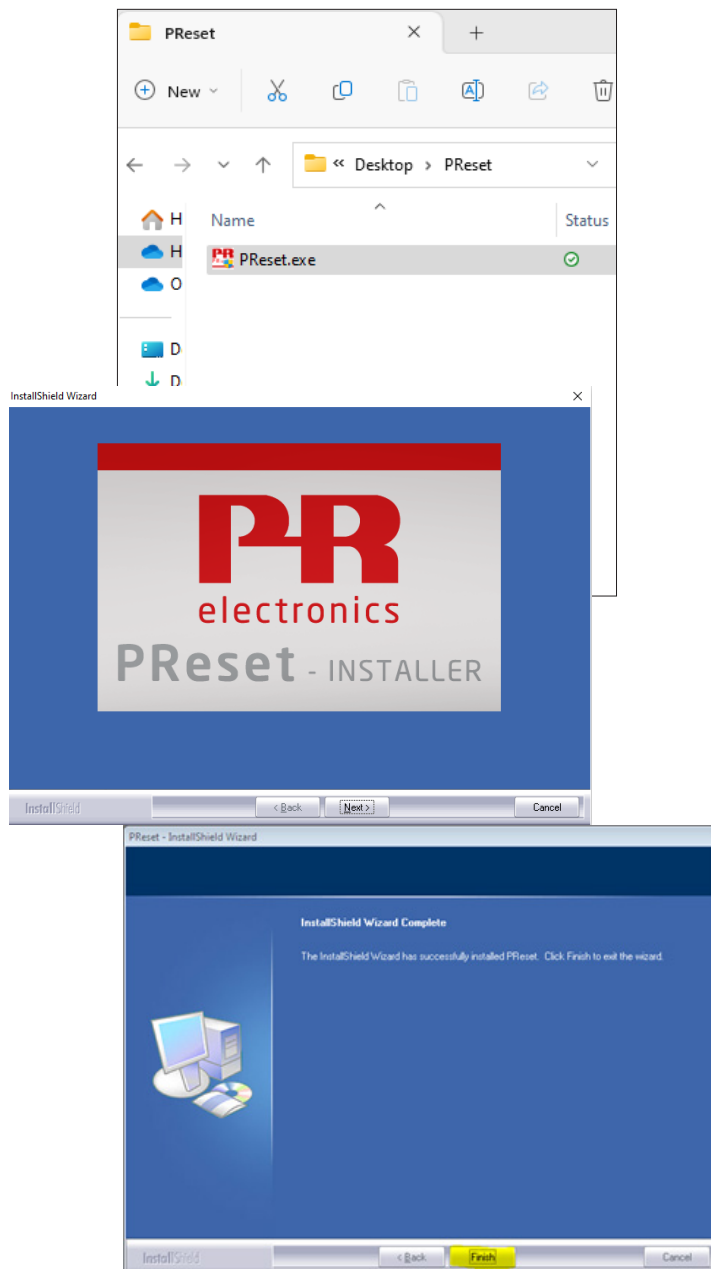
N.B.: Loop Link 5909 devices with serial no. <059999999 are NOT compatible with Windows.

Installation of PReset

The USB communications interface Loop Link 5909 **must not be connected** to the USB port of the PC until after installation of the PReset program.
PReset will be installed on your hard disk and a PReset icon will automatically be placed on the desk top.

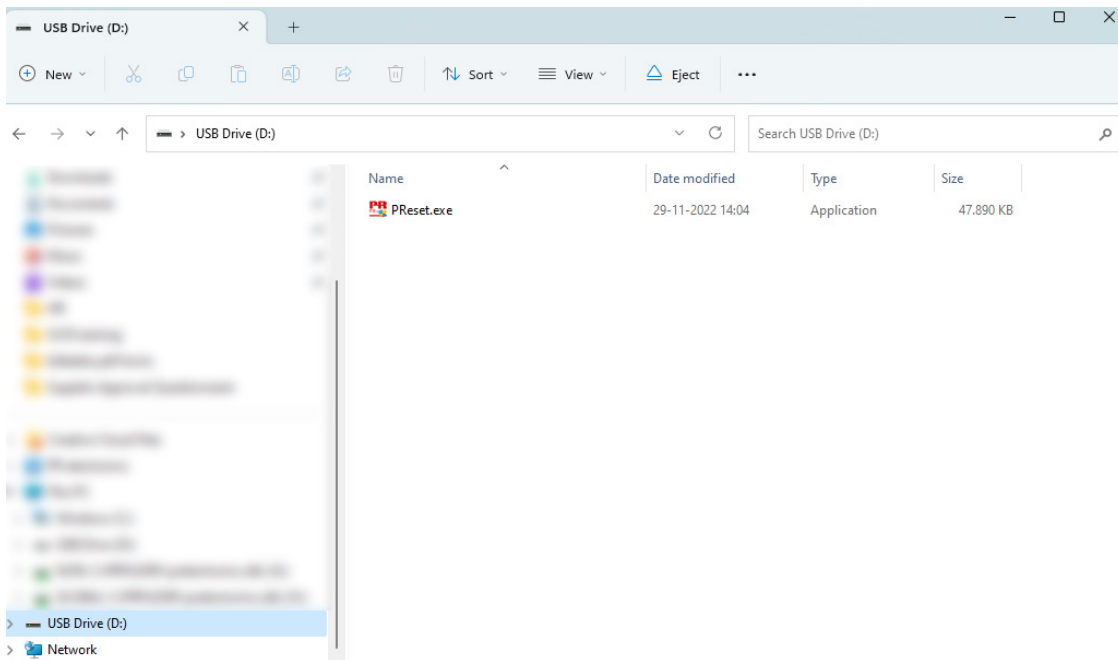
PReset installation on Windows 10 / 11

To install PReset on Windows 10 or Windows 11 it is necessary to be a local administrator on the PC. Download the software from www.prelectronics.com or install from the USB. Double-click the PReset.exe file and follow the instructions on the screen.



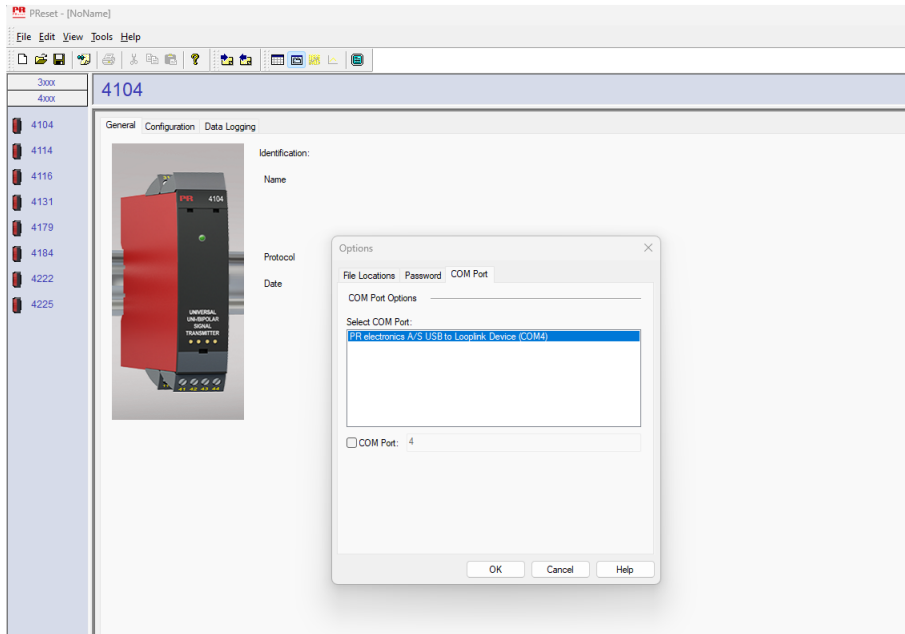
Installation from USB

1. Plug in the USB.
2. Open File Explorer and locate the USB drive. Double-click on the file "PReset.exe" to start the installation.

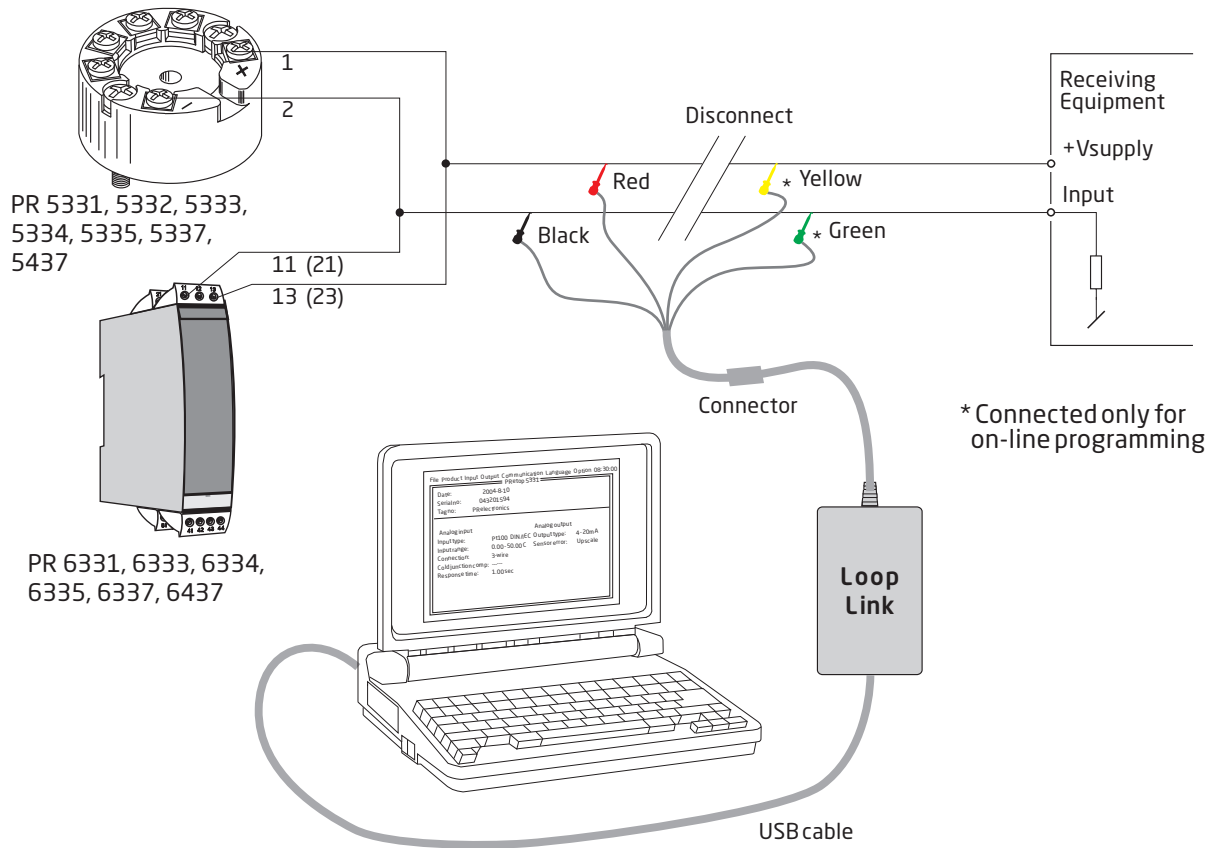


Configuration of USB communication in PReset

1. Start the PReset program and choose [Tools] [Select COM port], and the "Options" window is shown on screen.
2. Select PR electronics Loop Link. Click OK.
3. If you want to configure Loop Link for other USB ports, you must connect Loop Link to these ports and go through step 1 & 2 again.

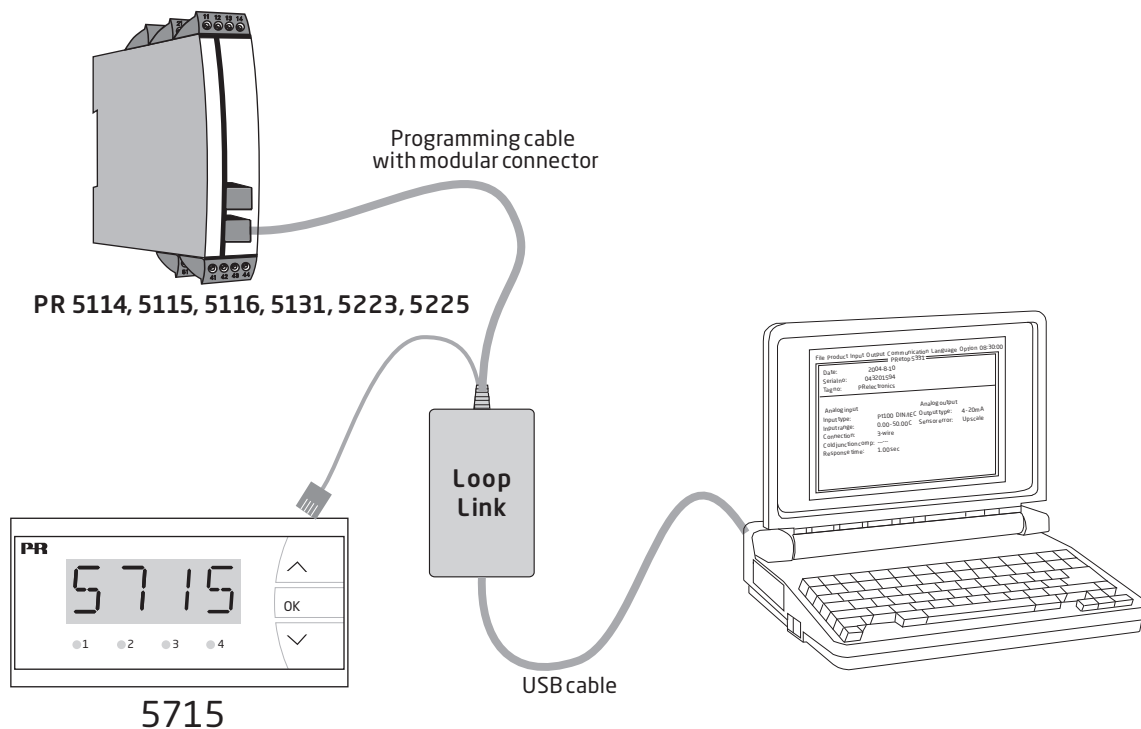


Connection of PR devices using EZ-Mini-Hooks



Loop Link is not approved for communication with devices installed in hazardous (Ex) area.

Connection of PR devices using a modular connector



Document history

The following list provides notes concerning revisions of this document.

Rev. ID	Date	Notes
104	2338	References to Windows 7 and 8 deleted. Windows 11 added.
105	2449	Wording 'intrinsicly safe' removed from warning text on page 4.

We are near you, *all over the world*

Our trusted red boxes are supported wherever you are

All our devices are backed by expert service and a 5-year warranty. With each product you purchase, you receive personal technical support and guidance, day-to-day delivery, repair without charge within the warranty period and easily accessible documentation.

We are headquartered in Denmark, and have offices and authorized partners the world over. We are a local

business with a global reach. This means that we are always nearby and know your local markets well. We are committed to your satisfaction and provide **PERFORMANCE MADE SMARTER** all around the world.

For more information on our warranty program, or to meet with a sales representative in your region, visit prelectronics.com.

Benefit today from *PERFORMANCE MADE SMARTER*

PR electronics is the leading technology company specialized in making industrial process control safer, more reliable and more efficient. Since 1974, we have been dedicated to perfecting our core competence of innovating high precision technology with low power consumption. This dedication continues to set new standards for products communicating, monitoring and connecting our customers' process measurement points to their process control systems.

Our innovative, patented technologies are derived from our extensive R&D facilities and from having a great understanding of our customers' needs and processes. We are guided by principles of simplicity, focus, courage and excellence, enabling some of the world's greatest companies to achieve PERFORMANCE MADE SMARTER.