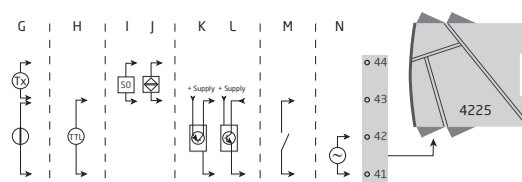
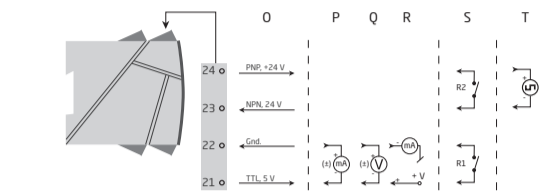
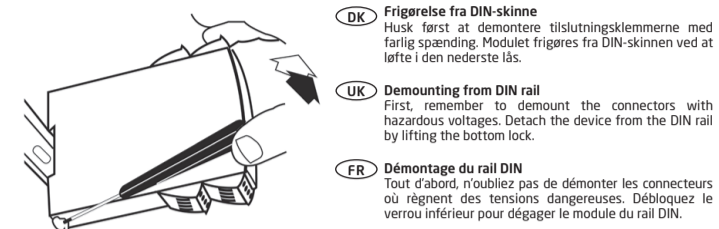
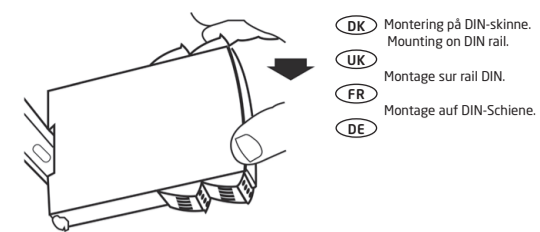


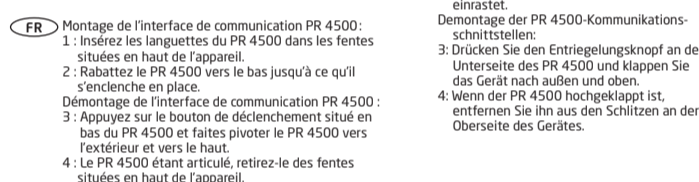
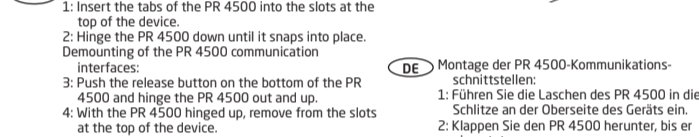
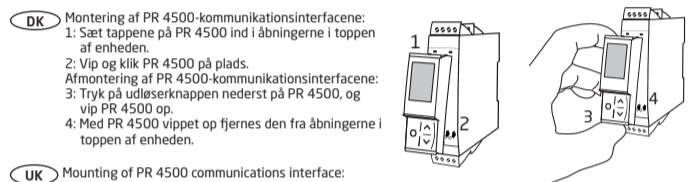
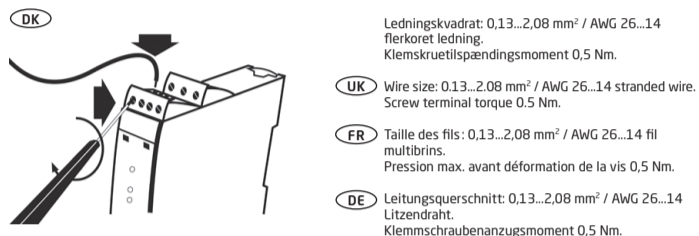
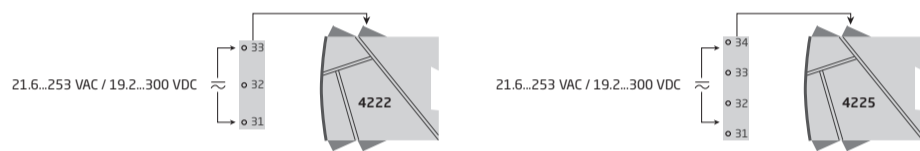
	DK	UK	FR	DE
A	2-tråds Tx	2-wire Tx	Tx 2-fils	2-Draht Tx
B	Strøm, DC	DC current	Courant cc	DC-Strom
C	Spænding, DC	DC voltage	Tension cc	DC-Spannung
D	Potentiometer	Potentiometer	Potentiomètre	Potentiometer
E	RTD og lin. R	RTD and lin. R	RTD et R lin.	WTH und lin. R
F	TC	TC	TC	TE



	DK	UK	FR	DE
G	Special trig strøm & spænding	Special trig current & voltage	Déclenchement spécial courant & tension	Spezial Trig Strom und Spannung
H	TTL	TTL	TTL	TTL
I	SO	SO	SO	SO
J	NAMUR	NAMUR	NAMUR	NAMUR
K	PNP	PNP	PNP	PNP
L	NPN	NPN	NPN	NPN
M	Kontakt (NPN)	Contact (NPN)	Contact (NPN)	Schalter (NPN)
N	Tacho	Tacho	Tachy	Tacho



	DK	UK	FR	DE	4222	4225A	4225B	4225C
O	Frekvens udgang	Frequency output	Sortie fréquence	Frequenz- ausgang	x			
P	Strøm	Current	Courant	Strom		x		x
Q	Bufferet spænding	Buffered voltage	Tension direct	Gepufferter Spannung		x		x
R	2-tråds strøm	2-wire current	Courant 2-fils	2-draht Strom		x		x
S	Relæ 1	Relay 1	Relais 1	Relais 1			x	
S	Relæ 2	Relay 2	Relais 2	Relais 2		x	x	
T	Frekvens udgang	Frequency output	Sortie fréquence	Frequenz- ausgang				x



(DK) Typenr.  
 (UK) Type no.  
 (FR) No. de type  
 (DE) Typenr.

(DK) Produktionsår fremgår af de to første cifre i serienummeret.  
 (UK) Year of manufacture can be taken from the first two digits in the serial number.  
 (FR) L'année de production est définie grâce aux deux premiers chiffres du numéro de série.  
 (DE) Die ersten beiden Ziffern der Seriennummer geben das Produktionsjahr an.

(DK) Benforbindelser  
 (UK) Pin connections  
 (FR) Raccordement des bornes  
 (DE) Klemmenanschluss

(DK) Godkendelser  
 (UK) Approvals  
 (FR) Homologations  
 (DE) Zulassungen

PR electronics A/S, Lerbakken 10, 8410 Rønde pr@pr-electronics.dk www.pr-electronics.com Phone: +45 8637 2677, Denmark 4220102	
21: output TTL (opt.)	31: supply 24.230VDC/100-10mA
22: output (opt.)	32: supply 24.230VAC/50-60Hz/2.5W
23: output (opt.)	
24: output (opt.)	
41: input TC: 2w / 2w / 4w pot. 1 mA	
42: input TC: 2w / 2w / 4w pot. 3 mA	
43: input TC: 2w / 2w / 4w pot. 3 mA	
44: input TC: 2w / 2w / 4w pot. 3 mA	

**UNIVERSAL I/F CONVERTER 4222**

Part Name	Hazardous Substances					
	Lead (Pb)	Mercury (Hg)	Cadmium (Cd)	Hexavalent Chromium (Cr (VI))	Polybrominated biphenyls (PBB)	Polybrominated diphenyl ethers (PBDE)
Printed circuit board	X	0	0	0	0	0

This table is prepared in accordance with the provisions of SJ/T 11364  
 O: Indicates that said hazardous substance contained in all of the homogeneous materials for this part is below the limit requirement of GB/T 26572.  
 X: Indicates that said hazardous substance contained in at least one of the homogeneous materials used for this part is above the limit requirement of GB/T 26572.

The product's Environmentally Friendly Use Period (EFUP) is 50 years **50**

**EU DECLARATION OF CONFORMITY** (4222DoC\_103) **CE**

As manufacturer PR electronics A/S, Lerbakken 10, DK-8410 Rønde hereby declares that the following product:  
**Type:** 4222  
**Name:** Universal I/F converter  
**From serial no.:** 191015001  
 is in conformity with the following directives and standards:  
 The EMC Directive 2014/30/EU and later amendments  
**EN 61326-1 : 2013**  
 Immunity test requirements for equipment intended to be used in an industrial electromagnetic environment. For specification of the acceptable EMC performance level, refer to the electrical specifications for the device.  
 The Low Voltage Directive 2014/35/EU and later amendments  
**EN 61010-1 : 2010 + A1 : 2019**  
 The RoHS2 Directive 2011/65/EU and later amendments  
**EN IEC 63000 : 2018**  
 This declaration of conformity is issued under the sole responsibility of the manufacturer.

Rønde, 28 March 2022  
  
 Stig Lindemann, CTO  
 Manufacturer's signature

**EU DECLARATION OF CONFORMITY** (4225DoC\_100) **CE**

As manufacturer PR electronics A/S, Lerbakken 10, DK-8410 Rønde hereby declares that the following product:  
**Type:** 4225  
**Name:** Universal I/F converter  
**From serial no.:** 201666001  
 is in conformity with the following directives and standards:  
 The EMC Directive 2014/30/EU and later amendments  
**EN 61326-1 : 2013**  
 Immunity test requirements for equipment intended to be used in an industrial electromagnetic environment. For specification of the acceptable EMC performance level, refer to the electrical specifications for the device.  
 The Low Voltage Directive 2014/35/EU and later amendments  
**EN 61010-1 : 2010 + A1 : 2019**  
 The RoHS2 Directive 2011/65/EU and later amendments  
**EN IEC 63000 : 2018**  
 This declaration of conformity is issued under the sole responsibility of the manufacturer.

Rønde, 28 March 2022  
  
 Stig Lindemann, CTO  
 Manufacturer's signature